

Kananrail

Aqours World Love Live! in LA
 ~Beyond the Pacific~
 @AX_YousoRail

What is Kananrail?

Kananrail takes place during HAPPY PARTY TRAIN as an audience-wide cheer movement recreating the shining train tracks that stretch out during Kanan's solo.

If you are in the green highlighted area, you are part of Kananrail!

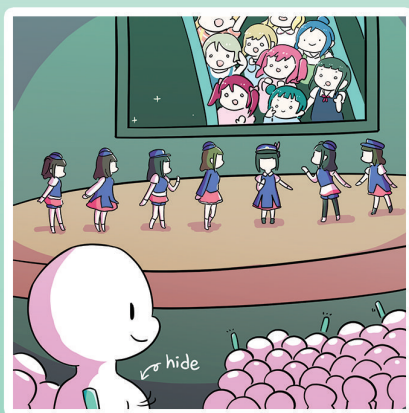
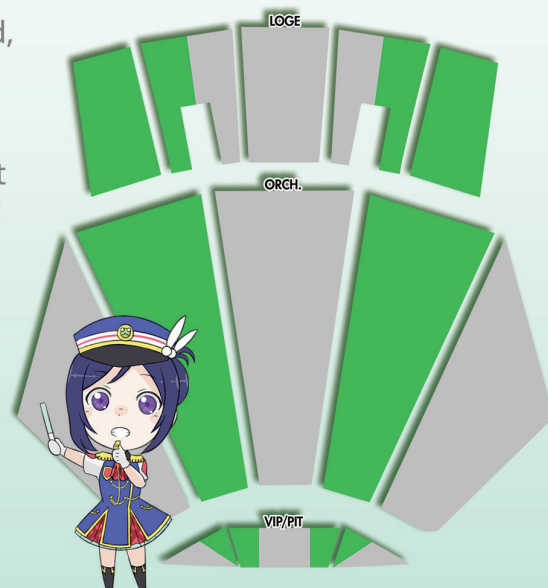
Pit: 301-305, 317-322,
 101-105, 501-505
 Orchestra: 201-228, 401-428
 Loge: 101-212, 412-517
 Mezzanine: Lights off

If your seat isn't highlighted, hide your penlights until the rail is over!

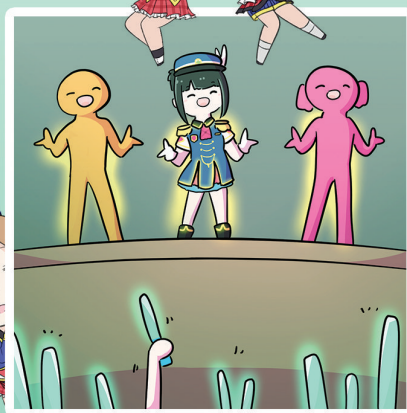
This job is just as important as the darkness highlights the rail to make it shine!

Check to see if you are in the Yousoroad!

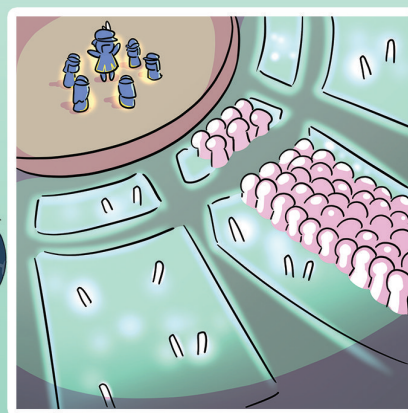
Design by @nicofeathers
 Chibi art by @ottermochi
 Panel art by @_CelticWhite_



Near the end of the instrumental bridge, switch your penlights to green and hide them!



"Omoi o nosete..."
 Kanan begins, the "rails" start in the pit section and go to the back of the theatre in a wave motion.



"...bokutachi o"
 This is your cue to rejoin by raising your penlights to cheer for the rest of the song!

Yousoroad

Aqours World Love Live! in LA
~Beyond the Pacific~
@AX_YousoRail

What is Yousoroad?

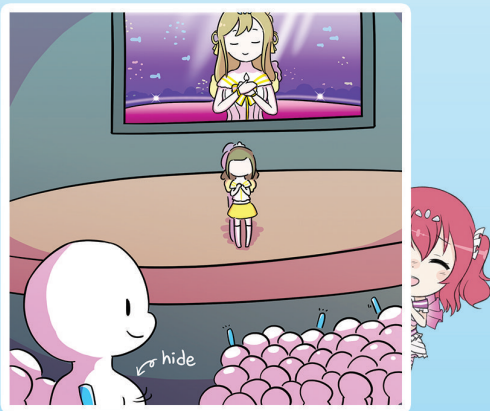
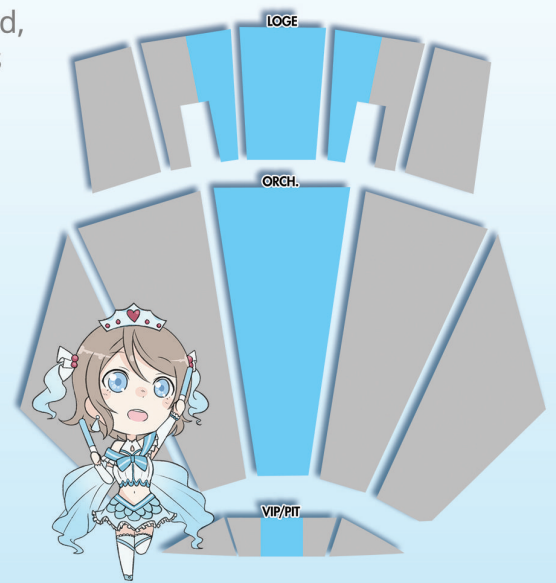
Yousoroad is a special audience-wide cheer taking place during Koi ni Naritai AQUARIUM at You's solo, recreating the shining pathway that stretches out during the MV.

If you are in the blue highlighted area, you will be part of Yousoroad.

Pit: 306-316
Orchestra: 301-328
Loge: 201-213, 301-321, 401-413
Mezzanine: Lights off

Scan QR Code for Video Demonstration

If your seat is not highlighted, simply hide your penlights until the road is over! This job is important as the darkness highlights the road to make it shine! Check to see if you are in the Kananrail!



"Daisuki Wow wo!
When you hear Aqours sing this line, switch your penlights to blue and hide them!



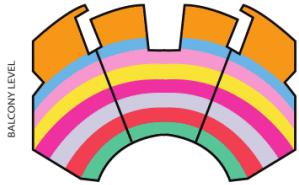
"Akuariumu de... mahou"
The start of You's solo is when the road will begin in pit and move to the back in a wave.



"Akuariumu de (Yeah!)"
This is when the rest of Aqours join back in, and it's your cue to join back in with your penlights!

AQOURAINBOW

YUUKI WA DOKO NI? KIMI NO MUNE NI!



COLOR ASSIGNMENTS

- MARI**
GA and VIP Floor
- KANAN**
Row AA, BB, CC
- DIA**
Row DD, EE
- YOSHIKO**
Row A, B
- RUBY**
Row C, D
- HANAMARU**
Row E, F
- RIKO**
Row G, H
- YOU**
Row J, K
- CHIKA**
Row L, M, N

AQOURAINBOW LYRICS AND CUES

In the verse before Chika's solo, please hide your penlight by tucking it under your arm, or lowering it behind the seat in front of you. The theater should turn completely dark during this time.

Aaah, atsuku naru imi ga
wakari kakete

While your penlight is hidden, swap to the assigned color, then wait for your cue to be sung.

Bring up your penlight with the first syllable of your assigned lyrics. Continue raising your penlight for the rest of the solo.

Kokoro ga motomeru hokorashisa
Hashiri tsuzukete tsukameru mirai
Yume ga [takusan] Yume ga [takusan]
Kienai [yume ga]

After the rainbow is formed, please keep your assigned color for the remainder of the song!

CONTRIBUTORS

TEAM  KAGAYAKITAI

- | | |
|----------------|------------------|
| @SuperSho_ | @_megasha |
| @PhillyJ_Anime | @melodychart |
| @illichii | @Ireya_ |
| @Dexanth | @_CelticWhite_ |
| @bearsketches | @ottermochi |
| @chkariko | @ssysm2 |
| @meltedgeneral | @DynamicDynasty_ |

And the top contributors to the
BRAND NEW WAVE Project GoFundMe:

Joonsung Choi, Kartal Sevimli, Brendan Chow, Christopher Haas,
Bret Stiles, Yadira Erives, Jazer Ainya Piano, Tyng Chou



View our video demonstrations here!

This playlist will provide a look at each penlight project and help visualize penlight movement and audio cues! Use the QR code, or visit:

The Team KAGAYAKITAI YouTube Channel



NO. 10 RAINBOW

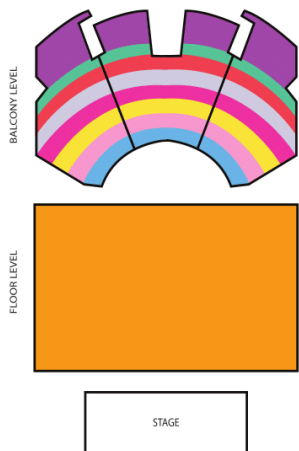
No.10

YOUSOROAD

KOI NI NARITAI AQUARIUM

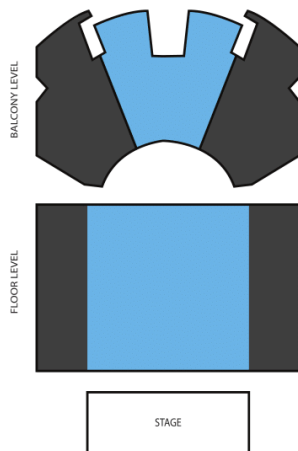
KANANRAIL

HAPPY PARTY TRAIN



COLOR ASSIGNMENTS

- **CHIKA**
GA and VIP Floor
- **YOU**
Row AA, BB, CC
- **RIKO**
Row DD, EE
- **HANAMARU**
Row A, B
- **RUBY**
Row C, D
- **YOSHIKO**
Row E, F
- **DIA**
Row G, H
- **KANAN**
Row J, K
- **MARI**
Row L, M, N



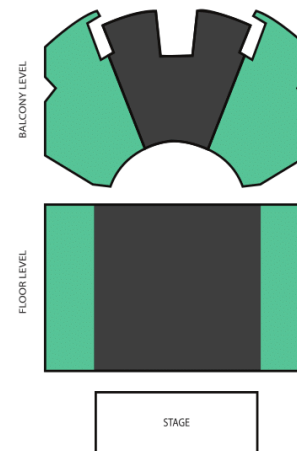
COLOR ASSIGNMENTS

- **DARK**
Balcony Section 101
Balcony Section 301
Floor Sides
- **ROAD**
Balcony Section 201
Floor Center

GA AND VIP FLOOR INSTRUCTIONS

If you are on the floor level, please notice your position in relation to the stage edge. If you are directly in front of the stage, then you are part of the YousoRoad!

If you are having trouble determining your position, face towards the front wall of the theater. If you walked forward in a straight line, would you be able to climb onto the stage? If you are, then you are in the "road" section. If not, then you are part of the "dark" section.



COLOR ASSIGNMENTS

- **DARK**
Balcony Section 201
Floor Center
- **RAIL**
Balcony Section 101
Balcony Section 301
Floor Sides

GA AND VIP FLOOR INSTRUCTIONS

If you are on the floor level, please notice your position in relation to the stage edge. If you are not directly in front of the stage, then you are part of the KananRail!

If you are having trouble determining your position, face towards the front wall of the theater. If you walked forward in a straight line, would you be able to climb onto the stage? If you are, then you are in the "dark" section. If not, then you are part of the "rail" section.

NO. 10 RAINBOW LYRICS AND CUES

In the verse before Aqours starts counting, please hide your penlight by tucking it under your arm, or lowering it behind the seat in front of you. The theater should turn completely dark during this time.

Ichi, Ni, San,
Yon, Go, Roku,
Nana, Hachi, Kyuu,
Juu!

Bring up your penlight with the count of your assigned member. Please keep your penlight up for the remainder of the song!

YOUSOROAD LYRICS AND CUES

At the end of the instrumental bridge, switch your penlight to blue. Please hide it by tucking it under your arm, or lowering it behind the seat in front of you. The theater should turn completely dark during this time.

Akuariumu de futari ga...

You will begin her solo, and on "de" the "road" will start at the front of the theater on both the Floor and Balcony levels and run to the back of the theater in a wave motion. Please only raise your penlight if you are in the appropriate seat, and keep in mind that each level of the theater will be starting at the same time!

...koi no mahou!

After You's solo ends, the darkened part of the road will rejoin the audience. Keep You's color for the remainder of the song!

KANANRAIL LYRICS AND CUES

At the end of the instrumental bridge, switch your penlight to green. Please hide it by tucking it under your arm, or lowering it behind the seat in front of you. The theater should turn completely dark during this time.

Omoi o nosete...

Kanan will begin her solo, and on "o" the "rail" will start at the front of the theater on both the Floor and Balcony levels and run to the back of the theater in a wave motion. Please only raise your penlight if you are in the appropriate seat, and keep in mind that each level of the theater will be starting at the same time!

...HAPPY HAPPY TRAIN to go!
Ashita ga yonderu bokutachi o

After Kanan's solo ends, the darkened part of the rail will rejoin the audience. Keep Kanan's color for the remainder of the song!



Guilty Kiss is one of three sub-units from Aqours, the second generation of idols in the Love Live! franchise. The unit's members and name were voted on by Love Livers themselves, following a long tradition of fan participation in Love Live. Since their formation in 2016, the group has released three singles and nine total songs. This is the group's first appearance on the American east coast, and they will be performing their first solo live in Japan later this year!

Refer to the back of this postcard to learn more about each member!



YOSHIKO TSUSHIMA

VA: Aika Kobayashi (Aikyan)

CALL AND RESPONSE

Aikyan: Ohayohane!

You: Ohayoshiko!

Aikyan: Dakara Yohane yo!

Both: Pyon~ (do a little hop)

A first year and the youngest member of the group, Yoshiko believes herself to be a fallen angel named Yohane due to her bad luck. When not dressing up in full “datenshi” garb and streaming on the internet, she acts as the video editor for Aqours music videos. It is her fallen angel aesthetic that has had such an influence on Guilty Kiss’s look and sound.



RIKO SAKURAUCHI

VA: Rikako Aida (Rikyako)

CALL AND RESPONSE

Rikyako: Biichi, sukecchi?

You: Sakurauchi~

Rikyako: Suki no tabemono wa?

You: Sandouicchi!

Riko is a second year student who has played the piano since she was a child. She transferred to Aqours’ highschool from Tokyo, where she attended the same school as the legendary School Idol group μ’s. While initially overwhelmed by the strong personalities in Guilty Kiss, she has come to embrace the others and has even been given the nickname “Lily” by Yohane.



MARI OHARA

VA: Aina Suzuki (Ainya)

CALL AND RESPONSE

Ainya: Shiny!

You: Shiny!

Ainya: And, lock ON!

You: (Act as if you just got shot with her love)

Mari, a third year, is half Japanese, half Italian-American, and acts as the Chairwoman of Aqours’ high school. Mari enjoys making jokes, riding her horse Starbright, and interjecting English phrases into her speech. Her love of industrial metal is another major influence for Guilty Kiss. In 2016, Mari was also voted by fans to represent America as the country’s poster girl!